

Copyright © 2009 by Gerhard Zinslerling Architects, Inc. All rights reserved. This drawing is the property of Gerhard Zinslerling Architects, Inc. and is not to be reproduced, stored in a retrieval system, or transmitted in any form or by any means, electronic, mechanical, photocopying, recording, or by any information storage and retrieval system, without the prior written permission of Gerhard Zinslerling Architects, Inc. The design of this project is the property of Gerhard Zinslerling Architects, Inc. and is not to be reproduced, stored in a retrieval system, or transmitted in any form or by any means, electronic, mechanical, photocopying, recording, or by any information storage and retrieval system, without the prior written permission of Gerhard Zinslerling Architects, Inc.

REVISIONS: CHG

These drawings are reproductions and may be different sizes than originally drawn. Under no circumstances shall the contractor or any party rely on drawings.

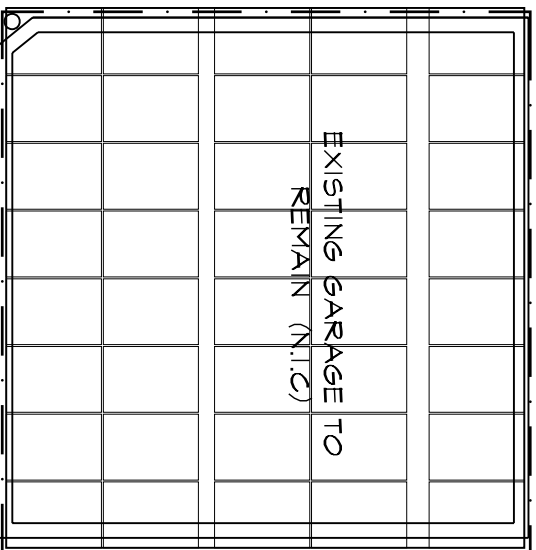
Each trade contractor shall verify all existing conditions prior to proceeding with the construction and notify the Architect immediately of any discrepancies.

DATE	ISSUED FOR	REV.
03/03/08	INPUT	
03/14/08	DEMO PERMIT	
05/31/08	ZONING	
09/31/08	2ND REVIEW CGH	

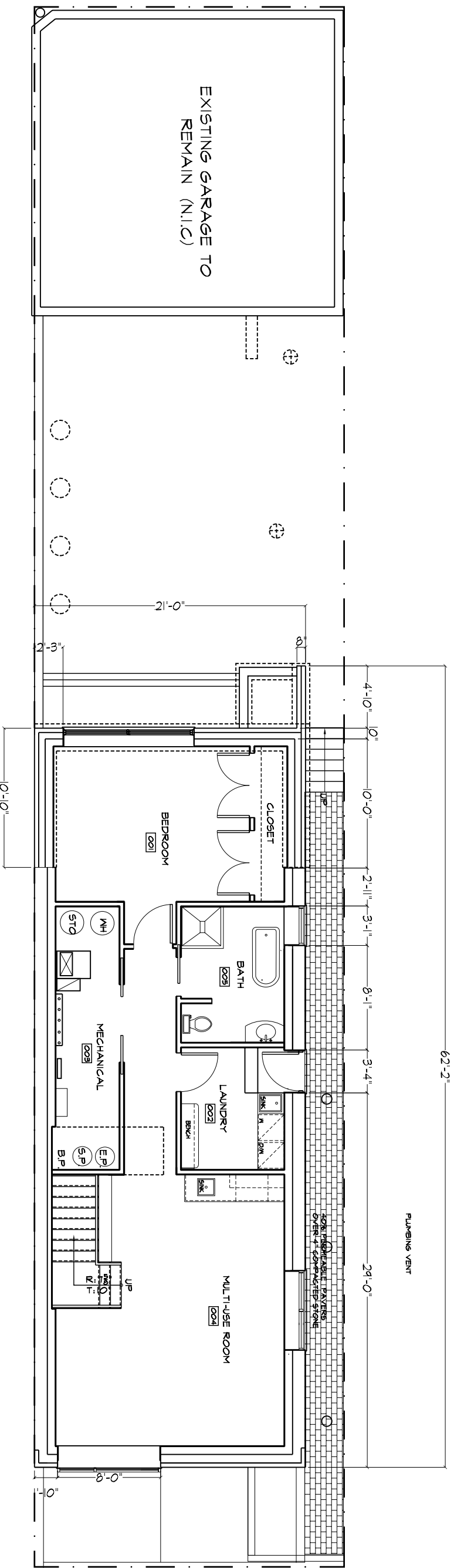
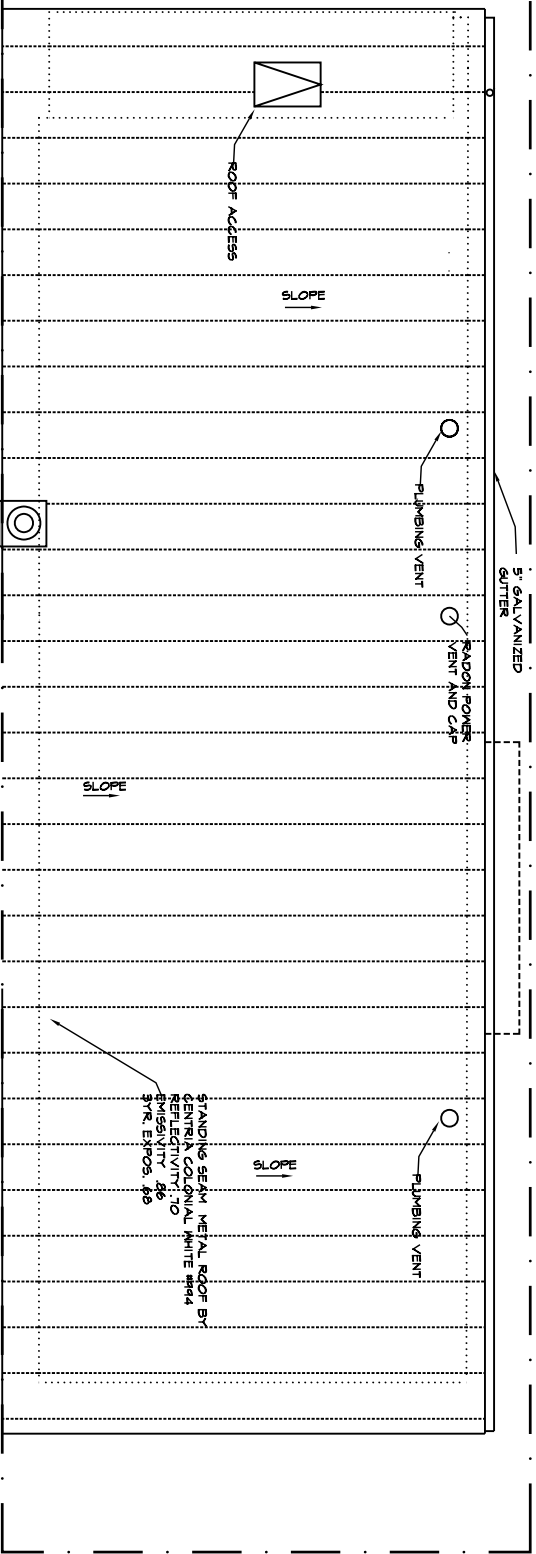
INTERIOR REMODEL TO:
1610 N. Honore
Chicago, IL

773.242.1254
gerhard
zinslerling
ARCHITECTS'
2018 W. Concord Pl.
Chicago, IL 60647

FLOOR PLANS
A1.2



2 ROOF PLAN
SCALE: 1/4"=1'-0"



1 BASEMENT FLOOR PLAN
SCALE: 1/4"=1'-0"